

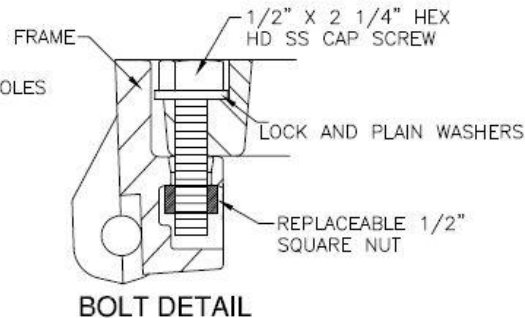
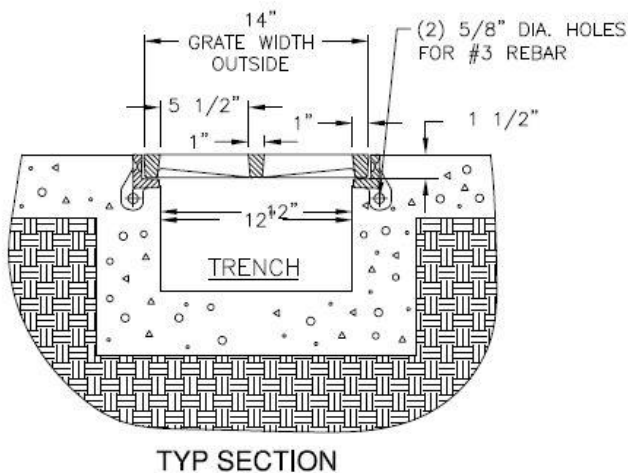
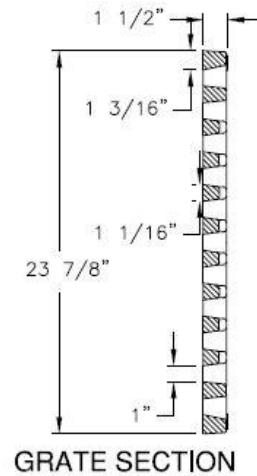
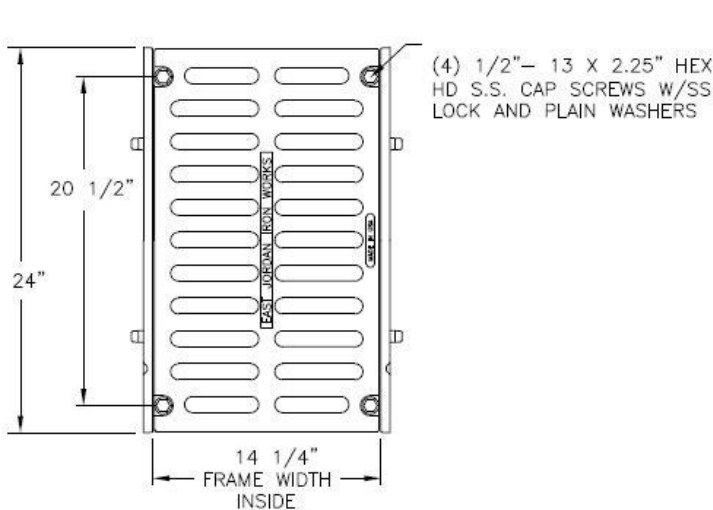
1-877-903-7246



www.trenchdrainsupply.com

Number	Series
<b>6954M2-Bolted</b>	<b>6950 Series</b> Trench Drain Frame and Grate Bolted Heavy Duty

## 69506954 Assembly



CAUTION: CHECK TRENCH RAIL AND GRATE  
BEFORE FINALIZING INSTALLATION. BE  
CAUTIOUS IN LINING UP ADJACENT ASSEMBLIES

CAUTION: DO NOT DISASSEMBLE BOLTED  
GRATES AND CHECK FRAME WIDTH INSIDE  
BEFORE SETTING SECTIONS IN CONCRETE.

### Specification

#### Manufacturer



**Grate Material :** Gray Iron (CL35)  
**Design Load:** Heavy Duty  
**Coating:** Undipped  
**Open Area:** 108 SQ IN  
**Certification:** ASTM A48  
**Country of Origin:** USA

DISCLAIMER - The customer and the customer's architects, engineers, consultants, and other professionals are completely responsible for the selection installation and maintenance of any product purchased from Trench Drain Supply and/or its manufacturers. TRENCH DRAIN SUPPLY MAKES NO WARRANTY, EXPRESS OR IMPLIED, AS TO THE SUITABILITY, DESIGN, MERCHANTABILITY, OR FITNESS OF THE PRODUCT FOR CUSTOMERS APPLICATION. The drawing and information provided remain the property and copyright of the manufacturer listed. The manufacturer reserves the right to modify specification without notice.